

# PJSC ARSENAL TELEKOMBUD

Comprehensive solutions  
Complete production cycle of metal structures



# CONTENT

- **About us**
- **Advantages**
- **Stages of work with an order**
- **Products**
- **Services**
- **Quality and safety**
- **Contacts**

# ABOUT US

## COMPLETE PRODUCTION CYCLE OF METAL STRUCTURES

Experience - over 15 years.

### Modern production site in Bila Tserkva town:

- own industrial premises - 7000 sq.m;
- total area of the plant - 10000 sq.m;

Convenient location near Kyiv city at the intersection of international highways and railways with direct connection to the seaports.

We improve our skills through employees' training.

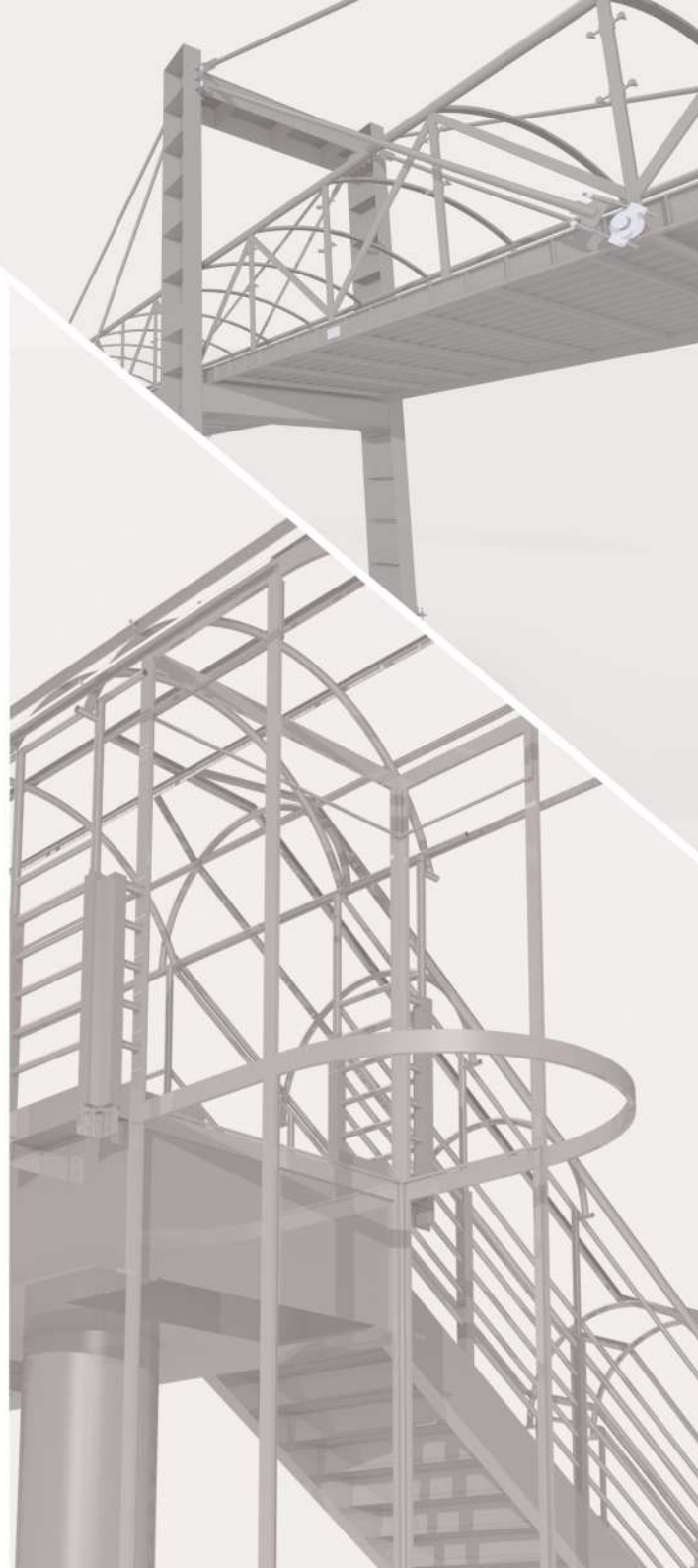
### Specialists confirmed the qualification:

- welders work under the supervision of a certified welding coordinator (IWE);
- qualifications of welders and welding operators are confirmed by international certificates (EN ISO 9606-1, EN ISO 14732);
- inspection of welded joints is performed by a certified specialist.

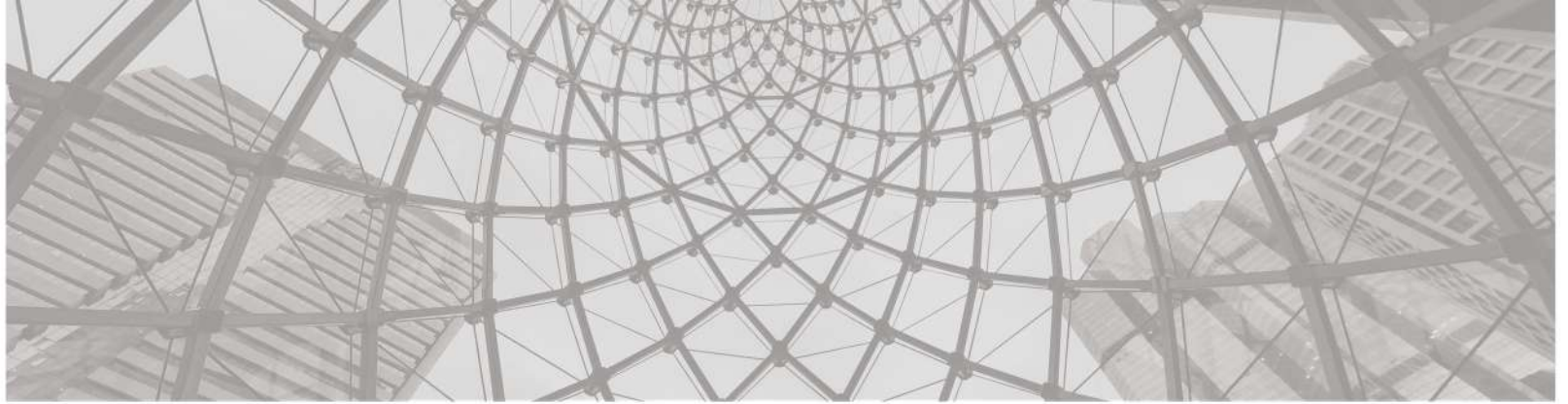
We increased production capability due to modernization, carried out in 2020, and plan it further.

We implemented and confirmed the quality management system in accordance with EN ISO 9001 in 2021.

We are successfully certified according to EN 1090-2 and EN ISO 3834-2 in 2021.



# ADVANTAGES



- own production facilities;
- production cycle covers the following stages of order fulfilment: design, nesting pattern and cutting, bending, hole-making, assembly and welding, surface cleaning, protective coating;
- complex, dynamically loaded structures: certification in the EXC 3 class;
- attractive cost due to complete production cycle;
- develop and implement the latest technologies by employees with academic degrees and more than 20 years of experience;
- convenient location infrastructure:
  - distance to railways - < 10 km;
  - distance to international highways - < 1 km;
  - distance to seaports - < 400 km;
- individual approach to the customer: we minimize financial risks when fulfilling an order;



# STAGES OF WORK WITH AN ORDER

**1** Define a list of requirements and expectations

**2** Agree on the cost and timing

**3** Prepare production

**4** Production and control

**5** Shipment

We determine as much as possible your needs for the product that we produce for you

It is important to determine a delivery schedule to minimize losses during transportation and storage of products

It is important to schedule all stages of production to ensure a delivery schedule

Our quality is a peace of your mind and confidence!

We maintain a delivery schedule

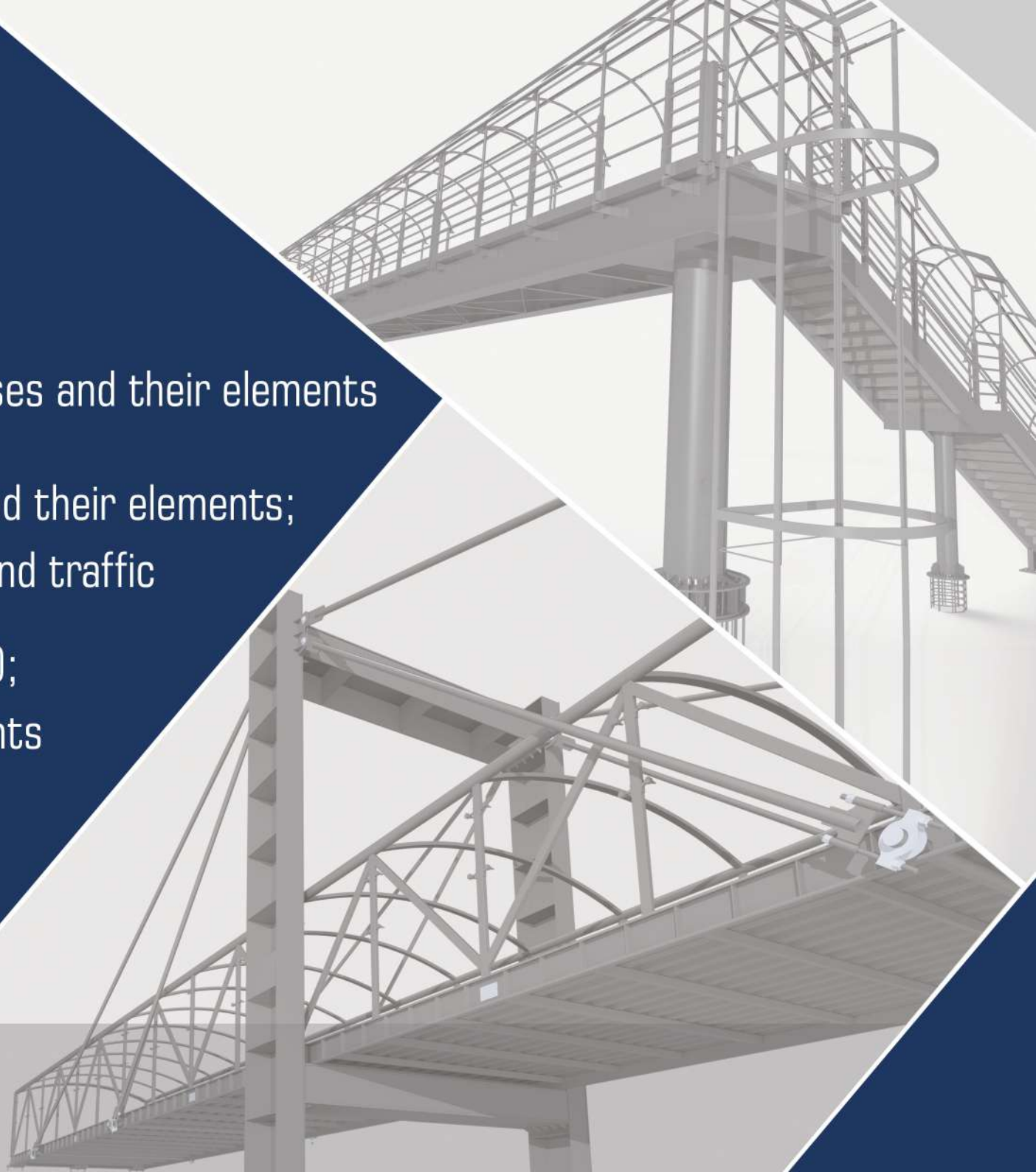


# PRODUCTS



## TRANSPORT INFRASTRUCTURE STRUCTURES:

- bridge crossings and overpasses and their elements (rack and span);
- metal pedestrian crossings and their elements;
- framed bents for road signs and traffic control automation systems (LED screens, traffic lights, etc.);
- lighting poles and their elements (holders of lamps and traffic lights).

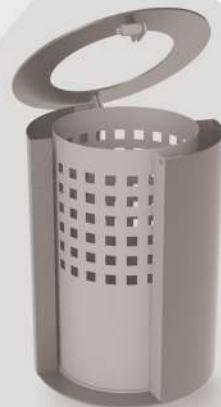
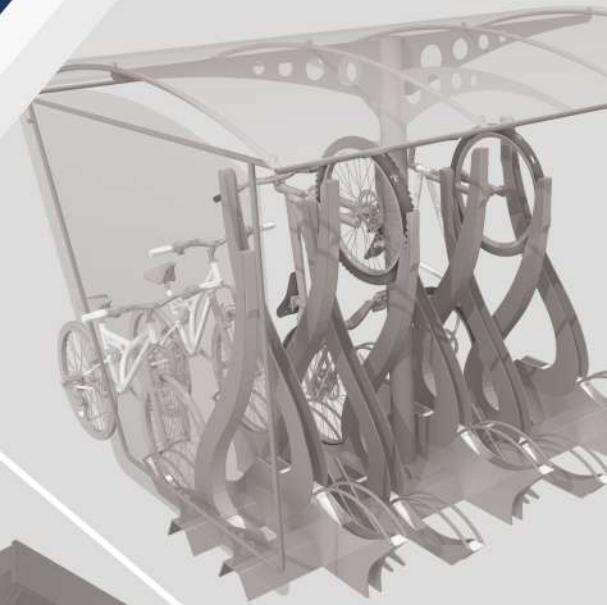


# PRODUCTS



## URBAN INFRASTRUCTURE CONSTRUCTIONS AND URBAN FURNITURE:

- parking lots and their elements, bicycle parkings;
- lighting poles and their elements (holders of lamps and traffic lights);
- pavilions and public transport stops;
- rubbish bins.



# PRODUCTS



## INDUSTRIAL BUILDINGS AND EQUIPMENT:

- warehouses and logistics complexes;
- industrial units;
- modular buildings;
- technological equipment and packaging.

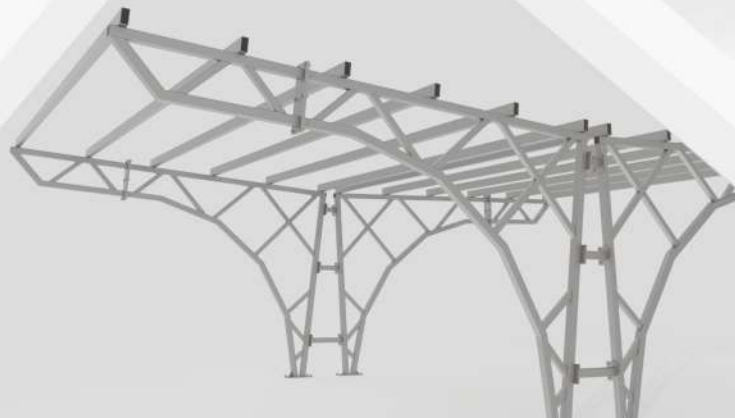


# PRODUCTS



## COMMERCIAL BUILDINGS AND EQUIPMENT:

- entertainment and shopping malls;
- stands and displays for ceramic tiles, doors, carpets and other goods;
- trade pavilions;
- trade awnings.

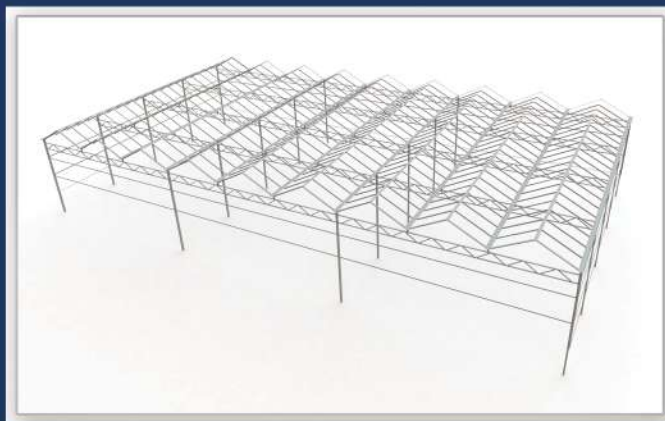


# PRODUCTS



## AGRICULTURAL BUILDINGS AND EQUIPMENT:

- farms (livestock complexes);
- elevators;
- hangars;
- greenhouses;
- construction of processing plants or factories.

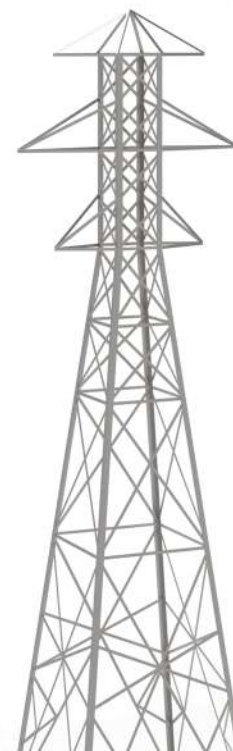


# PRODUCTS



## METAL STRUCTURES OF ENERGY SECTOR:

- video monitoring masts and lightning rods;
- bearing elements of solar power plants;
- chimney supports and metal chimneys;
- power line pylons, distribution stations and railway catenary.



# PRODUCTS



## SPORTS AND ACTIVE RECREATION FACILITIES:

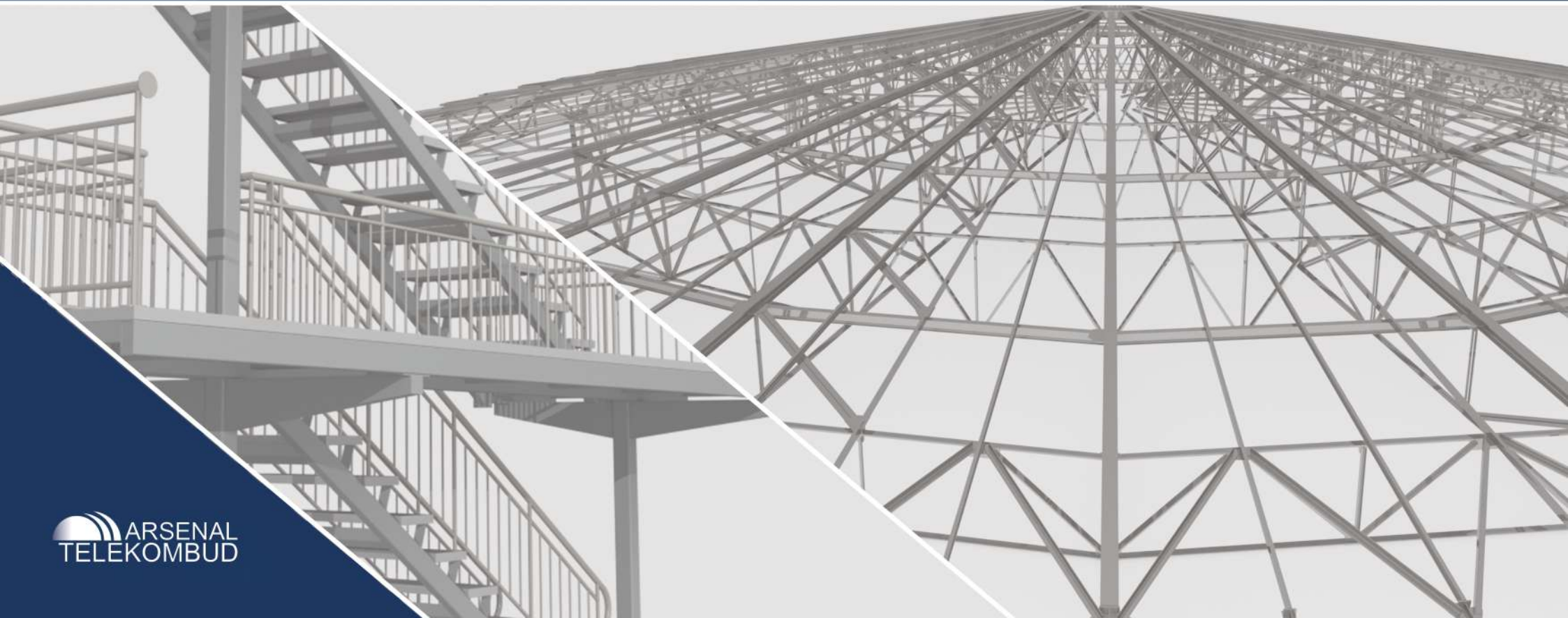
- metal structures of tennis court buildings;
- roof structures over sport constructions;
- metal structures of granstands.



# PRODUCTS

## NON-STANDARD METAL STRUCTURES AND THEIR PARTS:

- frame works, trusses, columns, beams, purlins;
- ladders of ships;
- metal structures of aeration systems;
- arque, cupolas.



# ENGINEERING SERVICES



## Engineering consulting on creation of the enterprises and construction sites:



Conducting preliminary research



Preparation of feasibility study



Documentation development on operation of equipment and distribution of finished products



Preparation of technical and economic feasibility study



Documentation development on manufacturing process organization and management

# PRODUCTION SERVICES: NESTING PATTERN AND CUTTING



## FORMED PARTS:

- sheet steel up to 1500x3000x36 mm;
- multigas plasma metal cutting machine model AL-1530+HPR130XD.

## NESTING PATTERN AND CUTTING OF PROFILED DETAILS:

- automatic CNC line GEKA ALPS 160;
- GEKA HYD110SD shears with automatic positioner of the SEMI PAXY model;
- band saw machines with possibility of group cutting of rolled profile at angles up to 60°:
  - Peddinghaus 1100 DG - up to 1010x480 mm;
  - «Мить 1-02 ПА» - up to 400x250 mm.

## NESTING PATTERN OF SHEET STEEL INTO STRIPS:

- length - up to 6000 mm;
- thickness - up to 55 mm;
- plasma cutting machinery equipped with Jasik CUT-160(J47).

# PRODUCTION SERVICES: BENDING

## PROFILE BENDING MACHINE OSTAŠ OPK 45:

- types of profile blanks - any, including, but not limited to:
  - channel 80 mm, radius - from 1200 mm;
  - round pipes 70x2 mm, radius - from 1000 mm;
- high repeatability of geometric dimensions of parts.

## SHEET BENDING MACHINE OF NT1330 MODEL:

- workpiece length up to 3000 mm;
- thickness up to 10 mm;
- features:
  - multi-site processing;
  - box-shaped parts.

# PRODUCTION SERVICES: HOLE-MAKING



## PERFORM ACCORDING TO THE FOLLOWING CHARACTERISTICS:

- ✓ **automatic CNC line GEKA ALPS 160:**  
up to 31 mm, thickness up to 15 mm
- ✓ **GEKA HYD110SD shears  
with SEMI PAXY automatic positioner:**  
up to 38mm, thickness up to 19 mm
- ✓ **three-spindle CND drilling machine  
Peddinghaus PCD-1100:**  
up to 40 mm
- ✓ **drilling machine on a magnetic basis  
PRO-100/2PP:**  
up to 100 mm; cutting of a cut till M24
- ✓ **radial drilling machine  
CSEPEL HUNGARY RF50:**  
up to 100 mm; cutting of a cut till M50
- ✓ **vertical drilling machines:**  
40 mm; cutting of a cut till M20

# PRODUCTION SERVICES: ASSEMBLY AND WELDING



## THE WORK ARE CARRIED OUT ON:

- universal assembly and welding tables
- building berths for assembly and welding of beams and columns

## WELDING CERTIFICATE EN 1090-2 +A1:2018 (STEEL CONSTRUCTIONS):

**121** – submerged arc welding with compact wire (SAW)

**135** – metal - active gas welding (MAG)

CERTIFICATION CENTER LTD PRODUCT CERTIFICATION CENTER	
<b>WELDING CERTIFICATE</b>	
No. 2518-CPR-0114-WC	
Manufacturer	PJSC «ARSENAL TELEKOMBUD» 03113, Prospekt Peremohy, 57, Kiev city, Ukraine
Technical specification	LVS EN 1090-2+A1:2018
Execution class(es)	Up to EXC3 according to LVS EN 1090-2+A1:2018
Welding Process(es)	(2) Submerged arc welding with compact wire (SAW) (3) metal - active gas welding (MAG)
Material group	1.1, 1.2 according to CEN ISO/TS 15008 and EN 1090-2, table 2 and 3
Responsible welding coordinator	Vitaliy Myrnyiuk IWE 16.11.1980 Name, surname Qualification Date of birth
Substitute	Qualification Date of birth
Confirmation	All provisions concerning welding as described in the above-mentioned technical specification(s) were applied.
Validity start	07.07.2022
Period of validity	06.07.2023
Remarks	
Place and date of issue	Riga, 06.07.2021

  
 Vitaliy Myrnyiuk  
 Head of Certification

  
 CERTIFICATION CENTER LTD  
 2518

CERTIFICATION CENTER LTD  
 Aptekas street 37A, Riga, LV-1005, Latvia  
 ☎ +371 67885160 📠 +371 67885161 🌐 info@perc.lv 🌐 www.perc.lv

# PRODUCTION SERVICES: SURFACE CLEANING



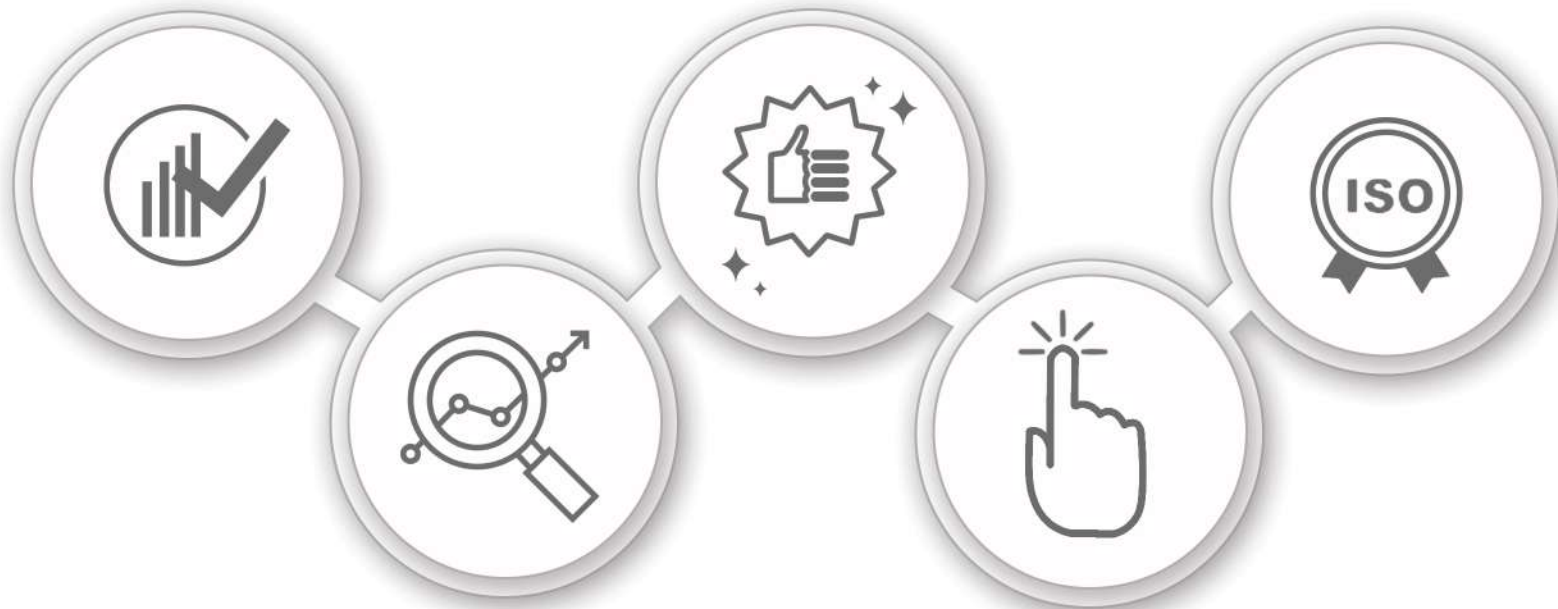
**Degree of steel cleaning - up to Sa3 (according to ISO 12944-4)**

control of a surface  
oxidation degree  
(according to ISO 8501-1);

abrasive blasting  
with a capacity  
of up to 9 sq.m/h;

evaluation of a degree of  
cleaning and roughness of  
cleaned surface  
(according to ISO 8501-1);

## Process stages:



analysis of the coating system  
requirements of the supplier in terms  
of roughness and cleaning degree;

dedusting of cleaned surfaces  
(according to ISO 8502-3);

# PRODUCTION SERVICES: PROTECTIVE COATING



## PERFORM ACCORDING TO ISO 12944:

- 1** determine the corrosive aggressiveness of the environment where the product will be operated
- 2** determine the system of corrosion protection depending on aggressiveness of the environment and the service life of product
- 3** establish the program and methods of quality control of the coating system
- 4** use one-component and two-component coverings from existing
- 5** develop a coating system for special conditions
- 6** application productivity - up to 120 sq.m/h

# QUALITY AND SAFETY

## Factory production control (FPC) in the class of execution EXC 3: EN 1090-1

- Operations: heat treatment, machining, molding, assembly, welding, painting, anti-corrosion treatment and folding.
- Marking of products with the **CE** mark in accordance to EN 1090-1 + A1: 2019.

## Welding certificate EN 1090-2 +A1:2018 (steel structures)

- 121 – submerged arc welding with compact wire (SAW).
- 135 – metal - active gas welding (MAG).

## Quality system of welding works EN ISO 3834-2:2005

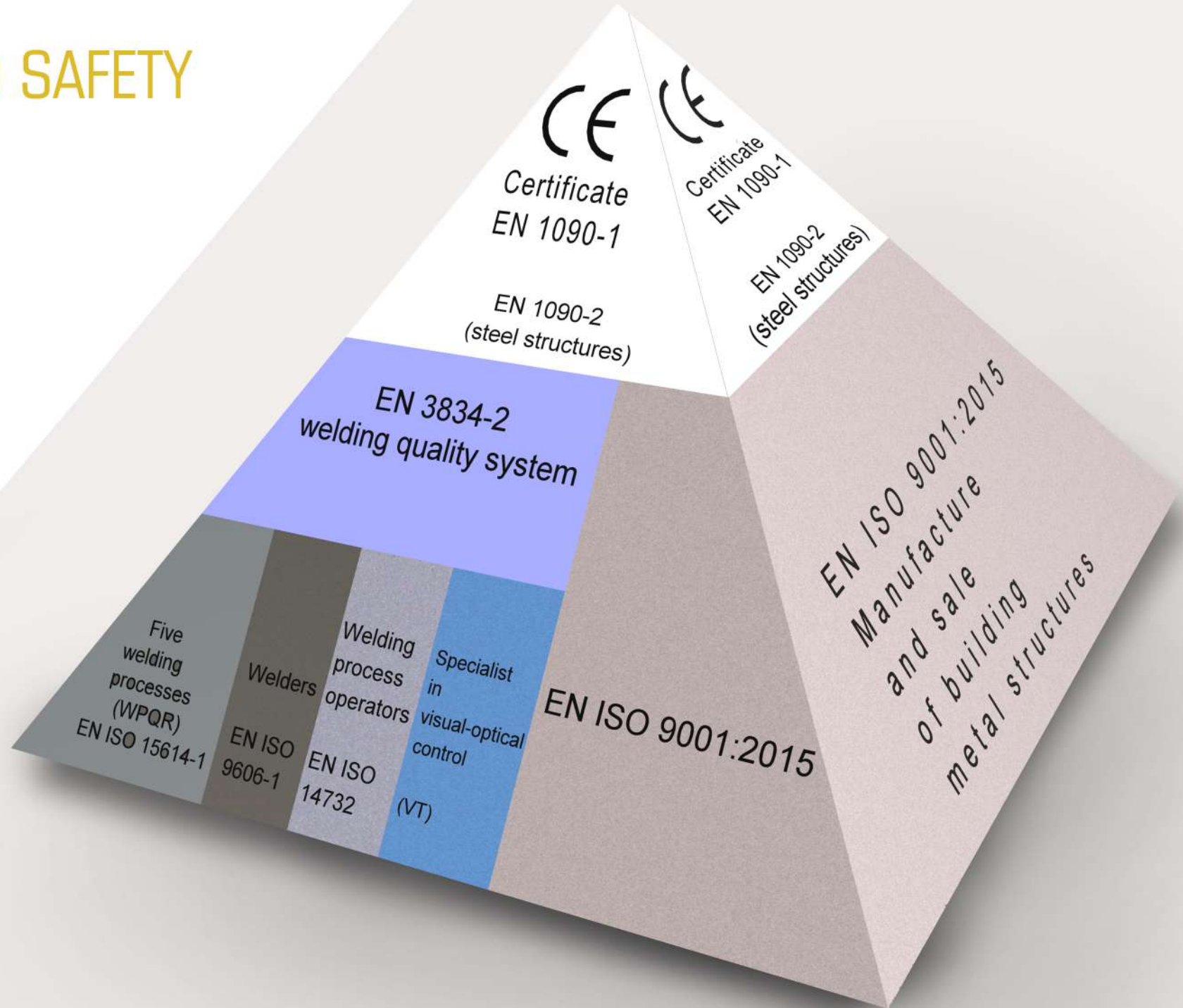
- carbon and low-alloy steels with a set of minimum yield strength  $\leq 350$  N/mm<sup>2</sup>;
- qualification of welders in accordance with EN ISO 9606-1:2017;
- qualification of welding process operators in accordance with EN ISO 14732:2013;
- visual optical (VT) method of control used by a specialist in non-destructive testing.

## Quality management system EN ISO 9001:2015

- manufacture of building metal structures and parts of metal structures, as well as their sale.



# QUALITY AND SAFETY



# CONTACTS



57 Beresteiskyi Avenue, 3 floor, Kyiv, Ukraine, 03113



+380-50-334-10-54



info@telekombud.com



www.telekombud.com  
www.telekombud.com.ua